

Department of Public Works

Almar Dyer
Commissioner, Liaison

Robert Harris
Director



Charles J. DePalma Complex
2311 Egg Harbor Road
Lindenwold, NJ 08021
Phone 856.566.2980
Fax 856.566.2988
highway@camdencounty.co
Camden County .com

**Rehabilitation of Hadden Avenue (CR561) Over Atlantic City Line
Borough of Berlin, Camden County, New Jersey
Structure No. 0461-153 – Contract No. B8-23**

**Bi-Weekly Progress Report No. 6
5-13-2024 through 5-24-2024**



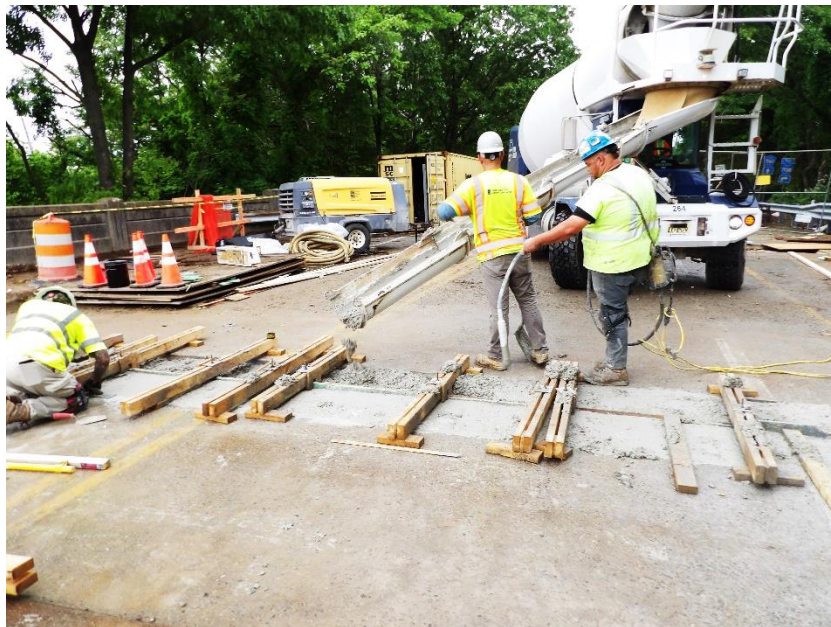
Workers set the center pier deck joint steel rails

Almar Dyer
Commissioner, Liaison

John Wolick
Director



Workers formed the north abutment deck joint



Workers poured concrete at the north deck joint

Almar Dyer
Commissioner, Liaison

John Wolick
Director



Workers prepped and poured all remaining concrete deck and curb patches



The center pier deck joint was completed

Almar Dyer
Commissioner, Liaison

John Wolick
Director



Workers installed the deck joint neoprene seals



The approach roadway undermining was repaired with flowable concrete fill

Almar Dyer
Commissioner, Liaison

John Wolick
Director



The approach roadways were milled and cleaned



Workers paved the approach roadways

Almar Dyer
Commissioner, Liaison

John Wolick
Director



Approach paving was completed and finish rolled



North and south approach roadway paving was completed

Almar Dyer
Commissioner, Liaison

John Wolick
Director

Following Construction Activities took place during above period:

Construction Activities:

Traffic Control:

1. Variable Message Sign at the Zulker Avenue intersection is in place and operational.
2. Traffic control, channeling devices and detour signs are in place and in good condition. No issues.
3. Traffic is moving safely through the detour. No accidents or incidents reported.
4. Berlin Township and Boro police requested that the County close traffic in both directions through the project limits. As a result, the Haddon Avenue bridge over the A.C. Transit rail line will be closed for the duration of the project.

Bridge Rehabilitation Work:

1. South State, Inc. continued to work on the reconstruction of the top of the bridge deck.
2. Workers completed all concrete work. Deck patching, curb reconstruction and deck & sidewalk joint concrete reconstruction repairs are complete.
3. Excavation of the settled northbound, right lane at the north approach was completed. The abandoned drainpipe from behind the abutment was removed, backfill compacted and flowable fill place beneath the undermined portion of the approach roadway were completed.
4. The north and south bituminous concrete approach roadways were milled and repaved. As part of the Extra Work Order (Item S-1), the asphalt curb was constructed at the NE approach corners at direct drainage away from the abutment wingwall.
5. The contractor has begun de-mobilization of equipment no longer necessary and removal of unused materials. Cleanup of the project site has begun.

Contractor's Two Week Look Ahead:

1. Place rip-rap behind the north abutment wingwalls to help mitigate soil erosion.
2. Re-Stripe the traffic lines on the bridge and approach roadways.
3. Power-wash the concrete deck surface and apply a liquid protective penetrating concrete sealer.
4. Seal the bridge curb/girder interface areas with an epoxy paint.
5. Remove traffic closure and channeling devices, remove all detour signage throughout the project and surrounding area.
6. Open the roadway to traffic. (Tentative date of opening, 5-31).

Department of Public Works



Almar Dyer
Commissioner, Liaison

John Wolick
Director

Charles J. DePalma Complex
2311 Egg Harbor Road
Lindenwold, NJ 08021
Phone 856.566.2980
Fax 856.566.2988
highway@camdencounty.com

Contract Information:

Notice to Proceed Date: March 4th, 2024

Project Completion: June 2nd, 2024

Project Substantial Completion: May 31st, 2024

Project start Date: March 4th, 2024

Bid opening Date: August 8th, 2023

Initial Award: August 29th, 2023

Contract Complete Percentage: Approximately 90%

**Bi-Weekly Informational Report Prepared By
Mark S. Steffens
Resident Engineer/Construction Inspector - JMT Engineering**