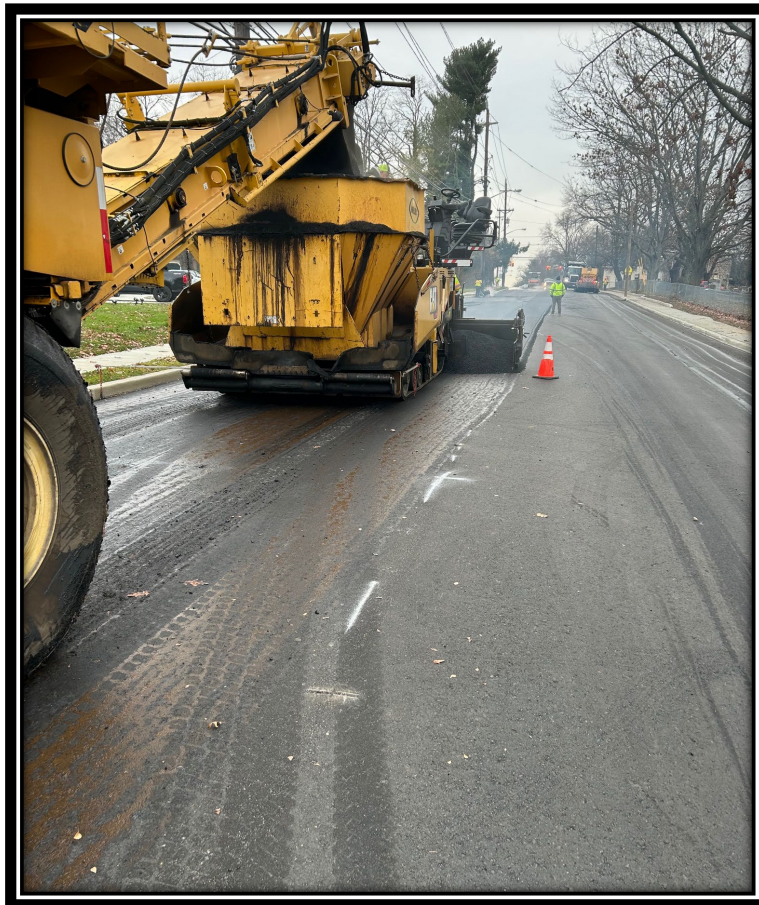


# Construction Management and Inspection Services



**CHURCH ROAD (CR 616) ROADWAY IMPROVEMENTS, B3-22**  
**Federal Project No. STBGP-PHILA-0613(301)**  
**NJDOT Job No. 5809322**  
**ERI Job #:30750 71**  
**Township of Cherry Hill**  
**County of Camden, New Jersey**

**BI-WEEKLY PROGRESS REPORT #27**  
**November 27, 2023 to December 8, 2023**



*Figure: 1 – Installation of HMA 12.5M64 surface course in the westbound lane between King’s Highway and Millstream Drive*



*Figure: 2 – Installation of concrete curb, sidewalk, and driveway apron along the westbound lane between Oak Avenue and Rt. 38*



*Figure: 3 – Installation of concrete monolithic curb and gutter along the westbound lane between Oak Avenue and Rt. 38*

**Work Completed the Weeks of November 27, 2023 & December 4, 2023:**

Black Rock's milling and paving crew installed HMA 12.5M64 surface course between King's Highway and Lake Drive West. The milling and paving crew milled 3,193 square yards of existing roadway and installed 2,036.28 tons of 12.5M64 surface course, 20.2 square yards of pavement repair, 42.43 square yards of HMA driveway apron, 8,907 linear feet of polymerized joint adhesive, 142.6 square yards of topsoil and set 9 new manhole castings. Black Rock's pipe crew returned to the site to abandon the existing storm sewer between Plumm Court and Millstream Drive with flowable fill. The pipe crew installed 16 cubic yards of flowable fill. Discover continued concrete improvements between Coolidge Road and Rt. 38. Discover installed 285.37 square yards of sidewalk, 96.28 square yards of concrete driveway apron, 2 square yards of detectable warning surface, 24.33 square yards of concrete swale gutter, 664.5 linear feet of curb, and 137.5 linear feet of concrete curb & gutter.

- #5: Traffic Safety Services – 119 MH**
- #11: Flowable Fill – 16 CY**
- #15: HMA Milling, 3" or Less – 3,193 SY**
- #17: HMA Pavement Repair – 20.2 SY**
- #18: HMA 12.5M64 Surface Course – 2,036.28 Tons**
- #20: Polymerized Joint Adhesive – 8,907 LF**
- #32: Set Manhole Casting – 2 Units**
- #40: Concrete Sidewalk, 4" Thick – 211.15 SY**
- #41: HMA Driveway, 4" Thick – 42.43 SY**
- #42: Concrete Driveway, Reinforced, 6" Thick – 96.28 SY**
- #43: Detectable Warning Surface – 2 SY**
- #44: 9" x 16" Concrete Vertical Curb – 664.5 LF**
- #45: 9" x 16" Concrete Monolithic Curb & Gutter – 137.5 LF**
- #46: Concrete Sloped Gutter, 8" Thick – 24.33 SY**
- #68: Topsoiling, 4" Thick – 142.6 SY**
- #CH1: Concrete Sidewalk, 4" Thick (Cherry Hill) – 74.22 SY**
- #CH9: Set New Manhole Casting – 2 Units**

**Anticipated Work for the Weeks of December 11, 2023 & December 18, 2023:**

Black Rock's paving crew will mill and overlay between Lake Drive West and Rt. 38. Discover will complete the concrete improvements for the project.

**Bid Opening Date: March 31, 2022**

**Amended Notice to Proceed Date: March 27, 2023**

**Start Date: March 27, 2023**

**Anticipated Completion Date: December 31, 2023**

**Contract Completion Date: December 31, 2023**

**Contract Completion Percentage: 85.08%**

**Initial Project Cost: \$4,200,000.00**

Prepared By:

A handwritten signature in blue ink, appearing to read "C. J. Noll".

C. Jeremy Noll, PE, CME, CPWM  
Resident Engineer  
Environmental Resolutions, Inc.