

# **ANNUAL REPORT**

## **2014**

### **CAMDEN COUNTY DEPARTMENT OF HEALTH AND HUMAN SERVICES**

**COMMUNITY HEALTH SERVICES  
ENVIRONMENTAL AND CONSUMER HEALTH SERVICES  
PUBLIC HEALTH EMERGENCY PREPAREDNESS**

**DIPIERO BUILDING  
512 LAKELAND ROAD  
BLACKWOOD, NEW JERSEY 08012  
856-374-6037**

**[WWW.CAMDENCOUNTY.COM](http://WWW.CAMDENCOUNTY.COM)**



**Making It Better, Together.**

Camden City, 2014

Dear Citizens:

I am very pleased to present the 2014 Annual Report for the Camden County Department of Health and Human Services. The Department is among the oldest County Health Agencies in South Jersey being established in 1968. Camden City and Cherry Hill Township were originally independent health departments that joined the County Health Department in our early history. That being accomplished all 37 municipalities are served by a single health agency.

Often times, the role and services that the Health Department provides are overshadowed by more visible programs within County Government. But there is no other agency that touches everyone to the extent and in the ways that Public Health does.

If we look at the 20<sup>th</sup> century we see tremendous gains in health and longevity associated with sanitation and hygiene, development of antibiotics and vaccines, and fluoridated water supplies all of which have been contributed by public health.

Historically, Public Health prevention and programs have not been appropriately valued, since often we look at medical remedies as a way to create good health. Frequently we overlook the fact that often good health can be effectively achieved by personal behavior, a healthier environment, progressive health policy and availability of health care access for all people.

The challenges today in 2014 have not disappeared but evolved and changed over the decades. The challenges today include overall reduction of health care costs through education and personal behavior, structural changes that will create cost reductions and operational efficiency for our County Public Health Agency, and seeing the impact of public health played out with increases in years of healthy living by all our residents.

Program changes are focusing on collaboration with community resources to reduce chronic diseases, empowering individuals to have a healthy lifestyle, developing sound public health policy and continuing our success in controlling infectious diseases.

In the area of structural changes we are always looking for new ways for public health to promote cost savings, better efficiency and a healthier Camden County.

I encourage you to read through this report and please do not hesitate contacting us with your ideas and opinions.

Sincerely,

Carmen Rodriguez, Freeholder Liaison  
Department of Health and Human Services

# *Mission Statement*

---

The Mission of Camden County Government is to improve the Quality of life for all Camden County residents by providing and assuring access to quality service and programs which are cost effective and responsive to local needs.

---

# Public Health

## What is Public Health?

Public Health views its patient as the **entire Community** and seeks to reach people before they become ill. The major distinction between public health and health care is that the public health focus is on preventing or delaying disease while health care treats disease. Public Health encompasses the entire community, small or large, and strives to create a healthier community that reduces health care cost and adds to years of active life.

## Core Public Health Functions

- Assess and monitor the health of communities and at-risk populations to identify health problems and priorities.
- Formulate public health policies with community and government leaders to address local and national public health programs and priorities.
- Provide all populations with access and appropriate cost effective care including health promotion, disease prevention and follow-up evaluation.

## Why should we invest in Public Health?

In 1999, the Center for Disease Control and Prevention (CDC) published a list of the top 10 public health achievements of the 20<sup>th</sup> century. These findings show that public health advances have been largely responsible for increasing life span of populations; over twenty five of the thirty years of increased longevity can be credited to public health initiatives. These public health initiatives include development of antibiotics, vaccines, clean water and a safer food supply. Medical advances account for less than 4 years of increased longevity for the 20<sup>th</sup> century. Since 1900 findings show the average life expectancy for Americans has increased by about 30 years. This has made a dramatic reduction in mortality for young children.

## Quotes from two well-known and respected Public Health Leaders

*“Public health programs help keep disease rates down, which in turn keeps health care costs down. It’s going to be hard to get the economy healthy again if our workers and our health care system are both sick.”*

Jeff Levi, PhD, Executive Director of TFAH. 2010

*The financial crisis makes it more important than ever for the country to make prevention a top priority. Even in these troubled times, prevention is an investment we can count on to deliver a big payoff—sparing millions of people from developing preventable diseases while saving billions in health care costs.”*

Risa Lavizzo-Mourey, MD, MBA President & CEO Robert Wood Johnson Foundation.

## **Ten Essential Health Services**

1. Monitor health status to identify community health problems.
2. Diagnose and investigate health problems in the community.
3. Inform, educate, and empower people regarding health issues.
4. Mobilize community partnerships to identify and solve health problems.
5. Develop policies and plans that support individual and community health efforts.
6. Enforce the laws and regulations that protect health and ensure safety.
7. Link people to needed personal health services and ensure healthcare when it is otherwise unavailable.
8. Ensure a competent local public health system and a competent personal healthcare workforce.
9. Evaluate effectiveness, accessibility, and quality of personal and population-based health services.
10. Research innovative solutions to health problems.

## Programs and Services provided by Camden County Department of Health & Human Services

### *Alcohol and Substance Abuse Unit*

- Prevention
- Education
- Adolescent/Adult
- Treatment
- Women

### *Communicable Disease*

- Disease Field Investigations
- Epidemiology
- HIV/AIDS
- Rabies Control
- Reportable Diseases
- STD Program (Sexually Transmitted Diseases)
- TB Program (Tuberculosis)



### *Public Health Nursing*

- Adult Health
- Child Lead Case Management
- Infant and Preschool
- Influenza Immunizations
- Maternal Child Health
- Preventive Screenings
- Special Child Health Care



### *Health Education/Promotion*

- Community Health Needs
- Health Education/Risk Communication
- Mobile Health Van/Health Connection-Health Screenings, Counseling, and Education
- Public Health & Community Planning
- Smoking Cessation/Cancer Prevention
- Annual Women's Health Conference
- Mobilizing Action through Planning and Partnership (MAPP)
- HealthEASE
- Matter of Balance
- Chronic Disease Self-Management Program
- New Jersey Poison Information Education System



## Environmental Health Services

- Retail Food
- Recreational Bathing
- Body Art
- Tanning Salons
- Public Health Nuisance
- Multiple Dwelling Units
- Pet Shops & Kennels
- Right-To-Know
- Residential UST
- Noise
- Solid Waste Facilities
- Hazardous Materials Complaints
- Hazmat Emergency Response
- Integrated Pest Management
- Pesticide Enforcement
- Swimming Pool Discharge
- Vapor Recovery
- Idling
- Air Quality
- Private Wells
- Individual Sewage
- Public Health Emergency

*Stabilizing leaking containers in a box truck.*



## Community Health Services Statistics 2014

### Alcohol and Substance Abuse:

<b>Camden County Funded Substance Abuse Programs 2014</b>		<b>Clients Served</b>
<b><u>Intoxicated Driver Services</u></b>	Total	
IDRC (Individuals Served)	Clients Served	1606
<b><u>Prevention/Education</u></b>	Clients Served	2981
<b><u>Outpatient Counseling</u></b>	Clients Served	2346
<b><u>METHADONE MAINTENANCE</u></b>	Clients Served	89
<b><u>Long-term Residential</u></b>	Clients Served	7
<b><u>Halfway House</u></b>	Clients Served	11
<b>**There were 1125 clients authorized for D/STR treatment</b>		
<b><u>DETOX</u></b>	Clients Served	191
<b><u>SHORT TERM RESIDENTIAL</u></b>	Clients Served	220
<b><u>MUNICIPAL ALLIANCE</u></b>	Programs Offered	258

### Childhood Lead Poisoning:

Active Cases	272
Environmental Inspections	10
Home Visits	112
<b>Total</b>	<b>394</b>

### Child & Adult Immunizations Health Services:

Child Immunizations	3319
Adult Immunizations	523
Flu Program	6322
<b>Total</b>	<b>10,164</b>

### Tuberculosis:

New Cases	13
Home Visits	1,055
<b>Total</b>	<b>1,068</b>



## Camden County Special Child Health:

Average active caseload	970
Unduplicated number of children served	1,868
New referrals	1,885
New SSI referrals	1,495
<b>Total served</b>	<b>5,537</b>

## Communicable Diseases-Programs

Rapid HIV Testing	576
Number that tested positive	2
Routine Serology	N/A
Sexually Transmittal Diseases	3,765
# seen and treated at our STD clinics	823
Cases of Syphilis (all stages)	121
Cases of Gonorrhea (all forms)	971
Cases of Chlamydia	2,673
Animal Bites Reported and Investigated	597
Confinement Notices Issued	118
Positive rabies specimens	13
Municipal Rabies Clinics we supported	35
# of animals reported as vaccinated at municipal clinics	2,999
Influenza Immunizations	10,164
*TB # of Clinic Visits	589
Immunization Audits	129

## Communicable Diseases- Reportable Diseases:

*Reports from Laboratories, Hospitals, Medical Providers, Public Health; figures only reflect cases that were under investigation and were determined to be confirmed, possible or probable cases of disease.*

<b>Disease</b>	<b>Count</b>
Amoebiasis	3
Babesiosis	19
Botulism- Foodborne	0
Brucellosis	0
Campylobacteriosis	63
Chikungunya	9
Cryptosporidiosis	7
Cyclosporiasis	1
Dengue Fever	0
Ehrlichiosis/Anaplasmosis	0
Anaplasma Phagocytophilum	10
Ehrlichia Chaffeensis	5
Giardiasis	17
Haemophilus Influenzae	11
Hepatitis A	0

Hepatitis B	201
Hepatitis C	489
Influenza	175
Legionellosis	14
Listeriosis	2
Lyme Disease	367
Malaria	1
Measles	0
Mumps	1
Pertussis	37
Psittacosis	0
Q Fever	0
Rocky Mountain Spotted Fever	5
Rubella	0
Salmonellosis - Non Typhoid	104
Salmonellosis- Typhoid Fever	0
Shiga Toxin-Producing E. Coli (STEC)	1
Shiga Toxin-Producing E. Coli (STEC) – O157:H7	5
Shigellosis	12
Saint Louis Encephalitis	0
Streptococcus Agalactiae (GBS)	3
Streptococcus Pneumoniae	38
Streptococcus Pyogenes (Gas)	4
Streptococcus Pyogenes (Gas) With Toxic Shock Syndrome	2
Streptococcus Pyogenes (Gas) Without Toxic Shock Syndrome	24
Tularemia	0
Unknown Fever/ Neurologic	0
Vancomycin Intermediate S. Aureus	0
Varicella	66
Vibriosis	0
Viral Encephalitis	0
West Nile Virus	2
Yersiniosis	0
<b>Total</b>	<b>2,139</b>
* < 5 cases not counted for	

**Health Education Unit**  
*Health Screening Program Statistics*

Month	Blood Pressure	Referrals	Cholesterol	Referrals	Fasting Blood Sugar	Referrals	Counseling Healthy Lifestyle	Referral for Access to Care	Smoking Cessation Referral	BMI Referral
January	7	2	6	3	0	0	7	3	0	0
February	8	4	7	1	1	0	9	1	0	2
March	14	6	6	3	1	0	12	10	3	1
April	17	7	12	5	5	0	18	4	0	1
May	11	1	8	3	2	0	12	4	1	1
June	46	18	40	24	3	0	43	9	3	8
July	8	2	8	5	1	0	19	3	2	0
August	48	11	32	12	7	2	48	9	4	2
September	51	15	49	26	3	2	51	16	6	2
October	19	8	12	9	2	1	19	7	3	1
November	43	13	35	14	9	1	44	6	5	7
December	10	6	6	3	3	0	9	3	1	1
<b>Total</b>	<b>282</b>	<b>93</b>	<b>221</b>	<b>108</b>	<b>37</b>	<b>6</b>	<b>291</b>	<b>75</b>	<b>28</b>	<b>26</b>

*January list doctor or insurance: 4*  
*February list doctor or insurance: 8*  
*March list doctor or insurance: 4*  
*April list doctor or insurance: 17*  
*May list doctor or insurance: 8*  
*June list doctor or insurance: 37*  
*July list doctor or insurance: 4*  
*August list doctor or insurance: 39*  
*September list doctor or insurance: 35*  
*October list doctor or insurance: 6*  
*November list doctor or insurance: 37*  
*December list doctor or insurance: 7*

## Environmental Health Inspections

Retail Food	3,864	Hazardous Materials Complaints	197
Recreational Bathing	330	Hazmat Emergency Response	83
Body Art	52	Integrated Pest Management	29
Tanning Salons	5	Pesticide Enforcement	89
Public Health Nuisance	1,732	Swimming Pool Discharge	0
Multiple Dwelling Units	30,333	Vapor Recovery	60
Pet Shops & Kennels	204	Idling	72
Right-To-Know	384	Air Quality	381
Residential UST	136	Private Wells	242
Noise	3	Individual Sewage	474
Solid Waste Facilities	225	Regulated Tanks	67
<b>TOTAL Number of Services: 38,667</b>			

*Response to a Plastic Chemical Fire in Camden County*



## SNAPSHOT OF OUR SERVICES

The following pages give more detailed information on a few of our services that we frequently receive questions about. These services are representative of what we do in providing for all residents of our community.

### *Alcohol and Substance Abuse*

- Information and Referral
- Education/Prevention
- Treatment and Recovery Supports
- Intoxicated Driver Resources

In 2014, the Community Health Services / Alcohol and Drug Unit saw an increase in the number of calls for treatment for prescription drugs and heroin related abuse. At the same time, local police departments, health systems and data provided by the Medical Examiner related to overdose increased adverse events secondary to that abuse, the unit worked with the County Administration and the Board of Chosen Freeholders to design a response to the unprecedented increase in in opioid abuse. Leaders in education, substance abuse prevention, healthcare, law enforcement were assembled into what is now the Camden County Addictions Awareness Task Force. The initial strategy was to immediately increase awareness of the problem. In May, the Task Force provided a forum which was held at the Scottish Rite Auditorium in Collingswood that showcased a collection of professionals, family members, recovering individuals and included 40 plus service providers. The forum was one of the largest substance abuse related events ever hosted in Camden County and was attended by over 750 concerned residents. In September, a Candlelight Vigil was held in remembrance of those who passed away as the result of the disease of addiction (overdose).



The strategy also includes the development of a ‘tool box’ with materials to assist educators and residents, billboards advertising the issue and where to get help, a new unit and an Addictions Awareness website, Naltrexone trainings, increased medication drop-boxes, better participation in the Prescription Monitoring Program and advocacy to increase the number of resources available to treat residents in need. There is still a lot of work to accomplish but with the collaboration of the community and key stakeholders, we fully expect to meet the challenge.

The Alcohol and Substance Abuse Unit processed over 2700 calls for information and referral, funded services for over 7000 clients residents as well as providing education and prevention to numerous youth and adults in the county. The Intoxicated Driver Resource Center provided education and referral to over 1400 individuals. In addition, we were able to highlight the achievement of thousands of Camden County residents who achieved long term sobriety.

## Community Health Services Division

- Camden County Health Connection
- Mobilizing Action through Planning and Partnership (MAPP)
- Southern Region Specialty Chest Clinic
- Special Child Health Program
- Take Control of Your Health: Chronic Disease Self-Management



## Division of Environmental and Consumer Health Services

- Emergency Response for Hazardous Materials
- Food Surveillance
- Multiple Dwelling Housing Inspections

## Office of County Health Officer

- County Bioterrorism Response Program



## Community Health Services

### *Health Education Unit: Camden County Health Connection*

The Camden County Health Connection promotes community wellness on site at county workplaces, health fairs, senior centers, public housing complexes, homeless shelters, nutrition sites, shopping centers and community organizations. The **Camden County Health Connection** is a mobile unit, which enables our Health and Human Services Department to extend the reach and availability of our health screening and disease risk assessment services provided at our health centers. The Camden County Health Connection houses an experienced staff of a registered nurse and health educators to provide a wide range of health-education and lifestyle-management programs that empower children and adults to take control of their health and improve their well-being.

The mobile unit enables the Health Department to increase access to health promotion, disease prevention and early detection programs for cancer, heart disease, diabetes and stroke in Camden City and southern Camden County. These services include the following:

- Blood sugar screenings
- Blood pressure screenings
- Cholesterol screenings
- Osteoporosis screenings
- Chronic Disease Management Training programs
- Stroke Risk Assessment Screenings
- Referrals for community health care services
- Health education
- Support and counseling
- Follow-up health care services

*The “Camden County Health Connection” Mobile Health Unit*



Support groups such as the Chronic Disease Self-Management Program, tobacco treatment and counseling, health seminars and skills-building workshops are also conducted upon request.

These services do not replace regular visits to a primary care physician, but rather emphasize the importance of annual check-ups and help arrange care for people who need them. The overall goal of the Camden County Health Connection is to link this region to needed health services such as health insurance, health care, social services and community health resources. The Camden County Health Connection serves as a health education resource center composed of videos, books, brochures and web-based action oriented tools to assist residents of all ages in the importance of preventive care.

### **Mobilizing for Action through Planning and Partnership: Approach to Public Health in Camden County (MAPP)**

Mobilizing for Action through Planning and Partnership (MAPP) is a community health assessment process developed by the National Association of County and City Health Officials and federal Centers for Disease Control and Prevention (CDC). MAPP is intended to help local public health system entities work collaboratively to assess and improve community health and quality of life. The local public health system includes academic institutions, community nonprofit organizations, foundations, health care institutions and providers, libraries, religious

and fraternal organizations, schools, social service agencies and other entities that provide public health services and share information about health issues with community residents. Since 2007, workgroups have been formed to implement strategies to address the following six priority issues which emerged through that assessment process.

- Cancer
- Cardiovascular Health
- Environmental Health
- Co-occurring Mental Health and Addictions Disorders
- Obesity/Overweight and Nutrition

In 2013 the Camden County Health Department collaborated with hospitals, health systems and health departments within Gloucester, Camden and Burlington counties, to: 1) identify, analyze and address health problems; 2) assess applicable data; 3) develop measurable health objectives and indicators; 4) inventory community health assets and resources; and 5) develop and implement coordinated strategies to improve health. This effort was entitled the Tri-County Community Health Needs Assessment (CHNA) Collaborative. The CHNA was conducted from September 2012 to June 2013. Through collaborative efforts, the community health needs assessment will build on prior work of the Camden County MAPP Coalition, local health systems, hospitals, Senior Services Division, Environmental Health and Community Health Services Divisions, and community, emergency and public health preparedness partners. The assessment was also conducted to comply with requirements set for the in the Affordable Care Act, as well as to further the health department's commitment to community health population health management.

The CHNA collaborative took a comprehensive approach to identifying the needs in the communities it services. These components included the following:

- Secondary Statistical Data profile
- 4 Data Collection Sessions
- 153 Key Informant Interviews
- 2480 Telephone Surveys
- 6 Focus Group Discussions

The 2013 community health needs assessment was published in January 2014 and is available on the Health Department Website. Health department staff presently work with MAPP workgroups and other coalitions and collaboratives on chronic disease, access to care, and mental health and substance abuse disorders.

## **Health Education and Promotion Programs**

### *Take Control of Your Health: Chronic Disease Self-Management Program*

The Chronic Disease Self-Management Program (CDSMP), developed at Stanford University, is an effective self-management education program for people with chronic health problems or people who take care of others with chronic health problems. In Camden County, the CDSMP is known as *Take Control of Your Health*. New Jersey Department of Health and Senior Services



(NJDHSS) provide statewide guidance and oversight for CDSMP. In collaboration with Camden Area Health Education Center and other community partners, the Health Department presents a series of workshops, which are given once a week for six weeks, in community settings such as senior centers and housing sites throughout the County. This program, is facilitated by two trained leaders, one or both of whom have chronic diseases themselves. These sessions enables people with chronic illnesses to learn ways to self-manage their condition and take charge of their life.

Topics covered include: 1) techniques to deal with problems such as frustration, fatigue, pain and isolation, 2) appropriate exercise for maintaining and improving strength, flexibility, and endurance, 3) appropriate use of medications, 4) communicating effectively with family, friends, and health professionals, 5) designing and maintaining a healthy eating and exercise plan and 6) learning how to evaluate new treatments. In addition, program participants learn decision-making, action planning, and problem-solving skills. Each participant in the workshop also receives a copy of the companion book, *Living a Healthy Life with Chronic Conditions*, and an audio relaxation tape, *Time for Healing*.

### *A Matter of Balance: Managing Concerns about Falls*

Many older adults experience a fear of falling. People who develop this fear often limit their activities, which can result in physical weakness, making the risk of falling even greater. A Matter of Balance: Managing Concerns About Falls is a program designed to reduce the fear of falling and increase activity levels among older adults.

A Matter of Balance includes eight two-hour sessions for a small group led by a trained facilitator. This nationally recognized program was developed at Boston University.

During the class, participants learn to:

- View falls as controllable
- Set goals for increasing activity
- Make changes to reduce fall risk at home
- Exercise to increase strength and balance

A Matter of Balance is a program that emphasizes practical strategies to manage falls. Classes are held 2 times a week for 4 weeks for 2 hours each or 1 time per week for 8 weeks. This program is based on *Fear of Falling: A Matter of Balance*. Used and adapted by permission of Boston University.

### *Health EASE*

HealthEASE was created in New Jersey to coordinate and expand health promotion and disease prevention services for older adults at the local level, with the goal of promoting, supporting and sustaining older adults in living healthier, more independent lives. HealthEASE targets older

adults at all levels of the health spectrum, from those experiencing no health issues to those with multiple chronic diseases and physical limitations.

### *Wellness Series - "Action Steps to Better Health"*

- Keeping Up the Beat: Heart Health
- Bone Up: Standing Tall Against Falls
- Your Health: Osteoporosis
- Keeping Your Mind Sharp
- Be Wise About Your Medications
- Move to Get F.I.T.

These one hour free programs will engage your members/community in fun, interactive wellness activities to promote independent and healthy living.



### **55 workshops were conducted in 2014**

*126 Workshops Total*

### **Special Child Health Services**

The Special Child Health Services Program assists families with children who have developmental delays and health needs birth through age 21. This program was originally established in 1928 as the result of the Birth Defects Law (1926). The Crippled Children Program was created with the intent to treat orthopedic conditions. Since that time there have been a number of changes in the law that now include children identified under the State Birth Defects Registry and more recently (2007) the addition of children identified through the Autism Registration.

This program is County based and provides Nursing Case Management. The County Case Management Unit serves as the entry point into health care and related services to facilitate cooperation among agencies. Families often need assistance with multiple tasks from identifying their child's basic needs to finding appropriate providers. Nurse case managers work with both children and their parents. These professionals assist families through the maze of the health services system and other related systems for the purpose of meeting individual needs. Specifically, the case managers assist with obtaining hearing aids and orthotics; payment of catastrophic bills; support groups; home nursing care; education and other needs.

Any child under the age of 21 is eligible for services that has a birth defect, a serious illness, has difficulty walking, talking, and understanding or is at risk of developing a handicapping condition. Services are provided regardless of financial status.

## **Southern Regional Specialty Chest Clinic**

The Southern Regional Specialty Chest Clinic was initiated in 2008 by Camden County Health Department at the request of New Jersey Department of Health and Senior Services. The program is staffed by both County Health Department and Cooper University Hospital. Cooper University Hospital provides Infectious Diseases Specialists who are well versed in the treatment of Active Tuberculosis of the Lungs and non-pulmonary sites. This group is headed by Henry Fraimow, MD, who is a member of the State TB Medical Advisory Board.

The TB Nurse Case Manager, for Cooper University Hospital, acts as a liaison between the State TB Program, Cooper University Hospital, and the Camden County DHHS. The Case Manager provides nursing assessment, teaching and monitoring of the patient with TB. She also conducts contact investigations, to provide early detection of new TB cases and treatment to exposed clients with latent TB infection. The County Health Department provides additional staffing for nursing and support services. All those seen in the Southern Regional Specialty Chest Clinic benefit from a “one stop shopping” model, as we provide Mobile x-ray services, on site lab technician, Sputum Induction booth, Physician and nursing assessments, and provision of needed medications.

The Regional Clinic provides expert TB Consultation to surrounding counties who may have drug resistant TB or extra-pulmonary TB, or clients who have difficulties during their treatment. The Regional Clinic provides service to patients and case managers from Atlantic Co., Atlantic City, Gloucester, Burlington, Salem, Cumberland, Ocean, Cape May, Mercer and Middlesex counties, in addition to our own cases here in Camden County. The patients receive their medications on a daily basis by DOT, Directly Observed Therapy. In addition, they are monitored closely for medication tolerance and side effects. This enables a thorough treatment plan, and ensures that treatment is completed as the Standards of Care require. The TB clinic also provides medical assessment to those new immigrants who have been flagged by the CDC for evaluation once in our country.

## **Public Health Emergency Preparedness Program**

The Camden County Bioterrorism Unit has been in existence for over 10 years. Currently the program is led by our Public Health Emergency Notification Systems Coordinator (PHENS) and also includes a Health Education/Risk communicator (HERC), an Epidemiologist and practicing pharmacist under the direction of the County Health officer. The purpose of the BT program is to ensure immediate and adequate response to any acts or threats of bioterrorism, infectious disease outbreak and other public health threats or emergencies. On a scheduled basis the Unit acts to keep response plans up to date, provides education and ongoing training to all department staff, and uses response drills to improve timeliness and evaluate our proficiency. Planning, training and exercising for an all hazards approach allows us to prepare for a wide range of

emergencies. Response drills exercise various aspects of our work which include but not limited to monitoring disease patterns, communicating risk and providing information to contain the spread of disease, prophylaxis for at risk persons using oral medications or immunizations, receiving and distributing supplies and medicines to the hospitals and our medical community.

Our Medical Reserve Corp Management of approximately 270 volunteers receives regular training which includes Health Education, use of Health Alert Network, Risk Communication, Exercise/Train/Evaluation, Planning with County Partners. Partners include County Emergency Management, local Hospitals, County Prosecutor's Office, County Office of Education, and Regional County Health Departments along with several others.



## 2014 Camden County Department of Health Trainings and Conferences

### *First Annual Local Boards of Health Summit*

#### **What is a Board of Health?**

A Board of Health works in collaboration with the Health Officer to assure that organizational activities are meeting the needs of the community.

The Camden County Department of Health and Human Services along with the Camden County Board of Freeholders hosted its first Annual Local Boards of Health Summit on October 8, 2014 at the Camden County Boat House. Representatives from Camden County Boards of Health were invited for an evening of orientation and training by the New Jersey Local Boards of Health Association. Each municipality represented received invaluable information from the following presenters:



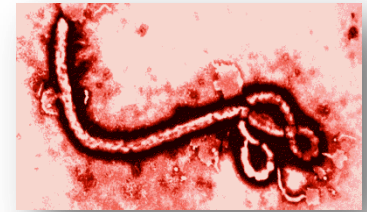
Steve Papenberg, *Health Officer of South Brunswick Township, Public Health Advocates, Policy Makers, Community Representatives & Leaders*

John C. Saccenti, *South Brunswick Advisory Board of Health, Chairman Public Health Advocates, Policy Makers, Community Representatives & Leaders*

Michael S. Richmond, Esq., *Attorney, New Jersey Local Boards of Health Association Public Health Advocates, Policy Makers, Community Representatives & Leaders*

## **Ebola Training Meeting for First Responders**

During the emergence of Ebola Virus Disease, Camden County Health Officer organized an Ebola training meeting for First Responders, which took place on October 23, 2014 at the Camden County College Civic Hall. The agenda included an Ebola update from regional epidemiologists along with a special update about Ebola and Communication Protocol from Dr. Rick Hong, MD, FACEP of Cooper Hospital.



Camden County Office of Emergency Management Coordinator, Sam Spino talked about Surge Capacity and Alternate Care Sites. Bob Saunders and the Camden County Hazmat team provided a demonstration on how to put on Proper Protective Equipment (PPE). The meeting answered the main question, “Are we prepared?” The meeting was attended by nearly 400 hundred Public Health professionals, Healthcare professionals as well as Law enforcement, Fire-fighters, and Emergency Medical Services and community members.

## **Alcohol and Substance Abuse**

The Camden County Substance Abuse Unit primary responsibility is to information and referral, prevention, education, and the County’s ability ensure treatment services are available to eligible County residents. Allocations for programs and services are based upon results of the County’s tri-annual Comprehensive Substance Abuse Plan and Municipal Alliance plan.



Those assessments highlight areas of concern, as well as, strategies to serve at-risk populations and reduce substance abuse in the community. The unit contracted with 15 agencies that were able to provide education, prevention, and a full range of treatment services.

The Municipal Alliance Program coordinates alcohol and drug prevention activities across participating municipalities. Lastly, the County Alcohol and Drug Director is accountable for overseeing and monitoring the Intoxicated Driver Resource Center’s service to residents convicted of DUI offenses.

## **Division of Environmental Health and Consumer Health Services:**

### **Emergency Response (Hazardous Materials)**

#### *County Environmental Health Act (CEHA)*

Camden County Department of Health is certified by NJDEP to perform investigation, enforcement, and regulation of air pollution, solid waste disposal, recycling enforcement, emergency, and terrorism response, hazardous waste storage and disposal, underground storage tanks, surface and ground water pollution, and noise. In addition to directly providing these services, Camden County coordinates Hazardous Materials Emergency Response services through inter-local agreements with five local fire/hazmat units.

Camden County's Hazardous Materials Response Unit is responsible for development and maintenance of standardized hazardous materials (*Hazmat*) and CBRNE (*Chemical, Biological, Radiological, Nuclear, and Explosive*) emergency response capability, capacity, and competence. Camden County Department of Health and Human Services has highly trained and equipped personnel that respond to Hazmat and CBRNE emergencies and conduct environmental investigations in coordination with the N J Department of Environmental Protection (*NJDEP*), the NJ Department of Health and Senior Services (*NJDHSS*), and the N J State Police (*NJSP*) Special Operations Section.

The Hazardous Materials Response Unit provides exceptional hazardous materials and environmental response services to the citizens of Camden County. The unit handles a broad range of complaints each year from private citizens, business interests, industrial facilities, and other public agencies. They vary in nature from small residential spills of household chemicals and heating oil to large-scale industrial spills, fires, illegal dumping and over the road accidents involving cargo spills or releases of motor vehicle fluids. Our hazmat unit is available to respond to any Hazmat/CBRNE incident in Camden County on a 24 hour per day /365 day per year.

The Hazmat Unit continues to be involved in domestic preparedness planning for the county. The Unit Director regularly participates in planning meetings with Camden County OEM. Based on planning initiatives, response protocols may be revised to improve our response capabilities. Coordination with the county OEM and Fire Marshall has resulted in an integrated network of primary and secondary departments for mutual aid including Hazmat/CBRNE response and mass decontamination.

## *Neutralizing an acid spill in Camden County*



### **CEHA Unit Septic and Well**

All individual sewage disposal system plan review, installation, repair, and compliance certificate are accomplished by our Septic and Well section. This group also is responsible for the review of private potable wells results & Private Well Testing Act information distribution. Recently our staff has begun a thorough evaluation of Public Non-community water systems within our County to insure the proper compliance with Federal and State Regulations.

### **Food Surveillance**

The Food Surveillance Unit's purpose is the prevention of food borne illness which may derive from retail food establishments. To deliver this purpose this unit focuses its inspection efforts to facilities that may present a greater risk of food borne illness. This approach and enforcement of NJAC 8:26 are known as Risk-Based Inspection. Retail establishments must be inspected as least once during each year, school facilities are inspected twice each year.

Additionally, a 24/7 Non-Hazardous Emergency Response system is in place to respond to fire and/or natural disasters involving food and/or health care facilities where a potential for contamination of food products exists. Annually retail food inspections are performed utilizing tablet computers. Inspection findings are captured and recorded during the course of each inspection and uploaded in real-time to our web-based inspection system.



### *Benefits of Digital Inspections*

- Increased Productivity and Accountability.
- Electronic Record Management and Access.
- Provides Public Records Request (OPRA).
- Standardized Inspection Methods and Reporting.
- Improved Compliance.
- Reduction in Enforcement Actions.

### *Constituent Benefits*

- Educates consumer on inspection process and outcomes.
- Reports inspection results on facilities of consumer interest i.e. child's day care or school, local market, favorite restaurant, etc.
- Reports on emerging food related events i.e. food related bioterrorism, food recalls, facility closures, and food related outbreaks.

### *Industry Benefits*

- Standardized inspection format easy to read, interpret, and translate.
- Critical violations are printed first with timelines for correction.
- Establishment with a good inspection history will see increased business.

## **Multiple Dwelling Housing Inspections**

### *State Local Cooperative Housing Inspection Program (SLCHIP)*

The Camden County Health Department's Multiple Dwelling Housing Unit is an authorized agent of the NJ Department of Community Affairs Bureau of Housing Inspections. As an authorized agent the Unit is responsible for ensuring that hotels, motels and multiple-family buildings of three or more dwelling units operating within Camden County are properly maintained and do not pose a threat to the health, safety and welfare of their residents, nor the community in general.

These objectives are achieved by licensed multiple dwelling inspectors conducting five year cyclical and compliance inspections of all hotels, motels and multiple dwellings. Condominiums, Cooperatives and Mutual Housing Corporations fall within the definition of multiple dwelling, and as such, are subject to its provisions.

In addition to the Environmental Programs highlighted above the following services are also provided: *Air Pollution Control, Community Noise Control, Pet Shop & Kennel Inspections, Public Health Nuisance Complaints, Right To Know (RTK), Public Recreational Bathing & Youth Camps, Residential Underground Storage Tank, Pesticide Investigation, Solid Waste Program, Tobacco Enforcement, Body Art, and Water Quality.*





Making It Better, Together.



# Contact Information

---

## **Camden County Health Officer**

**Paschal Nwako, MPH, CHES, REHS, DAAS**

512 Lakeland Road, Suite 506

Blackwood, NJ 08012

856-374-6037

[pnwako@camdencounty.com](mailto:pnwako@camdencounty.com)

## **Communicable Disease Unit**

**Caryelle Lasher, Supervisor**

512 Lakeland Road, Suite 501

Blackwood, NJ 08012

856-374-5117

[clasher@camdencounty.com](mailto:clasher@camdencounty.com)

## **Environmental Food**

**Matthew Grochowski, Principal REHS**

512 Lakeland Road, Suite 300

Blackwood, NJ 08012

856-374-6024

[mgrochowski@camdencounty.com](mailto:mgrochowski@camdencounty.com)

## **Environmental CEHA, Hazmat & Water Unit**

**Ernest Smith, REHS**

Section Supervisor, Environmental Compliance

512 Lakeland Road, Suite 301

Blackwood, NJ 08012

856-374-6058

[esmith@camdencounty.com](mailto:esmith@camdencounty.com)

## **Environmental Housing**

**Vance Bowman, Sr. Housing Inspector**

512 Lakeland Road, Suite 301

Blackwood, NJ 08012

[vbowman@camdencounty.com](mailto:vbowman@camdencounty.com)

## **Public Health Emergency Preparedness**

**Caryelle Lasher, PHENS Coordinator**

512 Lakeland Road, Suite 501

Blackwood, NJ 08012

856-374-5117

[clasher@camdencounty.com](mailto:clasher@camdencounty.com)

## **Koren Norwood, Health Educator/Risk Communicator**

512 Lakeland Road, Suite 526

Blackwood, NJ 08012

856-374-5127

[Koren.Norwood@camdencounty.com](mailto:Koren.Norwood@camdencounty.com)

**Lisa Mack, PH Epidemiologist**  
[lmack@camdencounty.com](mailto:lmack@camdencounty.com)

**Alcohol and Substance Abuse**  
*Alcohol and Drug Unit*

**John D. Pellicane, MBA**  
512 Lakeland Road, Suite 601  
Blackwood, NJ 08012  
856-374-6320  
856-374-6381 fax  
[jpellicane@camdencounty.com](mailto:jpellicane@camdencounty.com)

**Bettyann Cowling-Carson, Municipal Alliance Coordinator**  
[bettyannc@camdencounty.com](mailto:bettyannc@camdencounty.com)

**Health Education**

**Patricia D. Hearey, MPH, MCHES**  
Director of Health Education  
512 Lakeland Road, Suite 522  
Blackwood, NJ 08012  
856-374-6035  
856-374-6358  
[phearey@camdencounty.com](mailto:phearey@camdencounty.com)

**Public Health Nursing**

**Claudia Funaro, RN, MSN**  
Director of Nursing  
512 Lakeland Road, Suite 539  
Blackwood, NJ 08012  
856-382-2694  
(Fax) 856-374-6034  
[cfunaro@camdencounty.com](mailto:cfunaro@camdencounty.com)

**Health Centers**

**Bellmawr Regional Health Center**  
35 Browning Road  
Bellmawr, NJ 08031  
856-931-2700

**Camden County Clinic Services**

**Administration Building**  
600 Market Street  
Camden, NJ 08102  
856-225-5128  
856-756-2264/2265